



Intrduction 产品介绍

YT 型插头座适应于机电设备的动力线和控制线路的电器连接，尤其适应于探伤机械及环保设备。插座有自行关起的防尘盖，当拔出插头时防尘盖可自动关闭。

YT connector is specialized in connection of electrical power and control circuit for varieties electrical equipment and especially used in flaw detector and environmental protection equipment. With design of a protective cap on the fixed connector, when free connector is pulled out, the protective cap will automatically close.



Technical Data 技术参数

Rated Current: Exposure to the diameter ϕ 2.5 to 25A, ϕ 3.2 to 45A	额定电流: 接触对直径 ϕ 2.5为25A, ϕ 3.2为45A
Rated Voltage: 500V	额定电压: 500V
Ambient Temperature: -45~85°C	环境温度: -45~85°C
Relative Humidity: 3% at 40°C	相对湿度: 40°C达93%
Vibration: 50~500HZ; Accelerate 100m/s ²	振动: 振频50~500HZ; 加速度100m/s ²
Shock: Frequency 60~80cycles/minute; Acceleration 250 m/s ²	碰撞: 频率60~80次/分; 加速度达250 m/s ²
Contact: Exposure to the diameter ϕ 2.5 of 0.001 Ω ; ϕ 3.2 to 0.0005 Ω	接触: 接触对直径 ϕ 2.5为0.001 Ω ; ϕ 3.2为0.0005 Ω
Insulation Resistance: > 2000M	绝缘电阻: > 2000M
Pressure: 2000V	耐压: 2000V
Mechanical Life: >500 Cycles	机械寿命: >500次

Part Number Explanation 型号规格标示

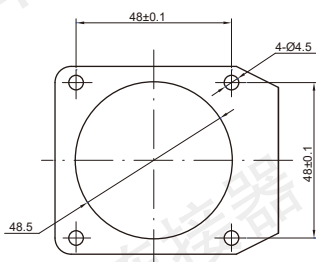
Contact Arrangement 芯数排布	Plug 插头		Receptacle 插座		YT-Series	YT-系列
	YT48K9T	YT48J9T	YT48J9Z	YT48K9Z	48-Size	48-尺寸
					J-Pin	J-插针
					K-Socket	K-插孔
					9-Contact Quantity	9-接触对 数量
					T-Plug	T-插头
				Z-Receptacle	Z-插座	



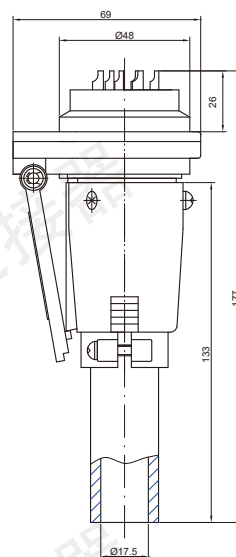
YT Series Contacts Arrangement YT系列芯数排布图

YT			
Contacts No. 芯数	9	10	15
Contacts arrangement 芯数排布图			
Diameter of contacts × Qty 接触对直径 × 数量	φ 3.2 × 3 φ 2.5 × 6	φ 3.2 × 3 φ 2.5 × 7	φ 2 × 2 φ 1.5 × 13
Rated voltage 额定电压	500V	500V	500V
Withstand voltage 耐压	2000V	2000V	2000V

Installation dimensions 安装尺寸



Dimensions 外型尺寸



上海华伦仪表电子有限公司
SHANGHAI HUALUN INSTRUMENTS & ELECTRONICS CO., LTD.

销售部地址: 上海天目西路218号嘉里不夜城2座3409室

ADD: Rm3409, Tower2, Kerry Everbright City, West Tianmu Rd218, Shanghai

邮编(P.C.): 200070

电话(TEL): 86-21-63178300 63178586 63177566

传真(FAX): 86-21-63178083

电邮(E-MAIL): sales@hualun.sh.cn sales@hualunconnector.com